

Datacard® Tru™ Photo Solutions

The fastest, easiest image capture process for photo IDs

New Datacard® Tru™ photo solutions completely automate image capture, image cropping and digital image processing, adding speed and increased productivity to your photo ID process. All it takes is a single click of your mouse and your image is captured, cropped and ready for printing on photo ID cards.

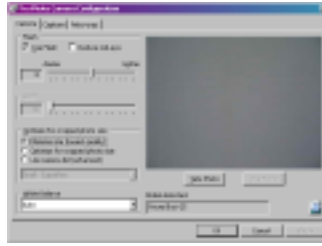
Offering the best in automated simplicity, Tru™ photo solutions deliver brilliant, true-to-life quality for the full-color images you capture. Advanced digital imaging capabilities built into the cameras—combined with Datacard® Tru™ photo software and Datacard® identification software packages—bring you the ultimate in both image capture and image quality.

Two solutions to meet your needs and budget

Datacard offers two Tru photo solutions. The standard Datacard® Tru™ photo solution comes with Datacard® Tru™ photo software, a 3.2 megapixel digital camera and a host of image capture accessories. For users who want the most advanced digital image capture technology, the Datacard® Tru™ photo professional solution features Datacard® Tru™ photo software, a 5.0 megapixel digital camera and an optional external flash. The high-powered external flash ensures high-quality images in low-light areas or in circumstances where subjects are photographed more than six feet from the camera.

Automated capture and cropping for easy, one-click operations

The patent-pending Datacard® Tru™ photo auto-capture and auto-crop features make high quality image capture as simple as a single click of your mouse. Simply move the cursor over the photo field of



Datacard® ID Works® identification software or ViaNet® identity information software, click once and the image is automatically captured and cropped. Your image is centered and cropped according to your pre-set specifications—and it is immediately ready for digital printing on a plastic card.

From capture to cropping, the entire process takes less than seven seconds, with no need to physically pan or tilt the camera, adjust it through software or using your hands. That translates into increased productivity and smoother operations, especially when long lines of visitors or customers are waiting to be enrolled.

Manual capture and cropping options

Tru photo software also offers manual image capture capabilities—in addition to the powerful advanced automatic features—to give you the flexibility to choose image capture variables you want and adjust the image as you require. If you require live video, simply choose the manual capture option and a live video screen appears in the photo field, giving you a real-time view of your subject. After the image has been captured, you can choose either manual or automatic cropping. With both automated and manual modes, Tru photo solutions give you the option of one-click simplicity or image control. You choose the mode that best fits your badging needs.

Everything you need for easy, high-quality image capture

When you purchase Datacard Tru photo solutions, you get all the necessary components to begin capturing images right away. There is no need to build an image capture system from scratch, with hardware and software from various vendors and manufacturers. Tru photo solutions give you everything you need—even the backdrop. They also include a digital memory card and standard USB cable for remote capture applications, which gives you the mobility to capture images anywhere and download them later into your ID software—a powerful advantage for ID badging away from a central security station or enrolling new members into a loyalty program on-demand.



DatacardGroup

Datacard® Tru™ Photo Solutions

A powerful addition to any integrated Datacard ID system

Tru photo solutions offers seamless compatibility with any product in the ID Works and ViaNet identification software families. Build a complete, integrated Datacard identification system by combining the Tru photo or Tru photo professional solution with a Datacard® ID software package and card printer.

Ideal for a range of applications

Tru photo solutions are suited for identification programs run by government agencies, corporations, schools, loyalty programs, membership programs or any other organization that requires full-color ID image quality and user-friendly image capture operations.

From the world leader in identification

Datacard offers the industry's broadest, best-selling portfolio of fully integrated identification systems, software, card printers and accessories. Experienced security professionals insist on the Datacard® brand because our solutions offer unparalleled reliability, productivity and ease of use. Plus, they are backed by world-class service and support around the world.



Tru Photo Solution Components

- Datacard® Tru Photo Solution Software with USB license key
- 3.2 megapixel camera
- USB cable
- Country-specific power cord
- Power cord adapter
- Tripod, backdrop, stand and frame
- SanDisk® memory card (SDC-16M)
- Installation instructions

Specifications

- Physical dimensions: 3.35 in. x 2.20 in. x 0.94 in. (85 mm x 56 mm x 23.9 mm)
- Weight: 5.83 oz. (165 g) camera body only
- Operating environment:
 - Humidity: 10%-90%
 - Temperature: 32-104 F (0-40 C)
- Image resolution:
 - High-resolution image capture: 1600 x 1200 pixels
 - Medium-resolution image capture: 1024 x 768 pixels
 - Low-resolution image capture: 640 x 480 pixels
- Lens focal length: 5.4-10.8 mm
- Aperture: F2.8 to F3.9 zoom lens
- Flash range: Subject should be 2 to 6 feet (.6 to 1.8 meters) from camera
- Memory: SanDisk® memory card (SDC 16M)
- Agency approvals: CE Mark certified, FCC Class B, UL

Tru Photo Professional Solution Components

- Datacard® Tru Photo Solution Software with USB license key
- 5.0 megapixel camera
- USB cable
- Country-specific power cord
- Power cord adapter
- Tripod, backdrop, stand and frame
- 32 MB SanDisk® CompactFlash® card
- Installation instructions
- Optional external flash components (120V/240V):
 - Flash
 - Bracket
 - Syncro cord and hot shoe adapter
 - Country-specific power cord

Specifications

- Physical dimensions: 4.76 in. x 2.91 in. x 2.75 in. (121 mm x 73.9 mm x 69.8 mm)
- Weight: 14.5 oz. (410 g) camera body only
- Operating environment:
 - Humidity: 10%-90%
 - Temperature: 32-104 F (0-40 C)
- Image resolution:
 - High-resolution image capture: 1600 x 1200 pixels
 - Medium-resolution image capture: 1024 x 768 pixels
 - Low-resolution image capture: 640 x 480 pixels
- Lens focal length: 7.2-28.8 mm
- Aperture: F2.0 to F3.0 zoom lens
- Optional external flash specifications (120V/240V):
 - Adjustable for full, half and quarter power
 - Three second recycle time
 - Flash life 50,000 flashes minimum at full power
 - Recommended work distance of 6 to 15 feet (1.8 meters to 4.5 meters) depending on the environment
- Flash range: Subject should be 2 to 6 feet (.6 to 1.8 meters) from camera
- Memory: 32 MB SanDisk® CompactFlash® card
- Agency approvals: CE Mark certified, FCC Class B, UL

DatacardGroup

11111 Bren Road West

Minnetonka, MN 55343-9015

+1 952 933 1223

+1 952 931 0418 FAX

www.datacard.com

Datacard is a registered trademark and service mark of DataCard Corporation. ID Works and ViaNet are registered trademarks and Tru is a trademark of DataCard Corporation. SanDisk and CompactFlash are registered trademarks of SanDisk Corporation.

© 2004 DataCard Corporation. All rights reserved.

Specifications subject to change without notice.

Printed in U.S.A.

DC4-7000